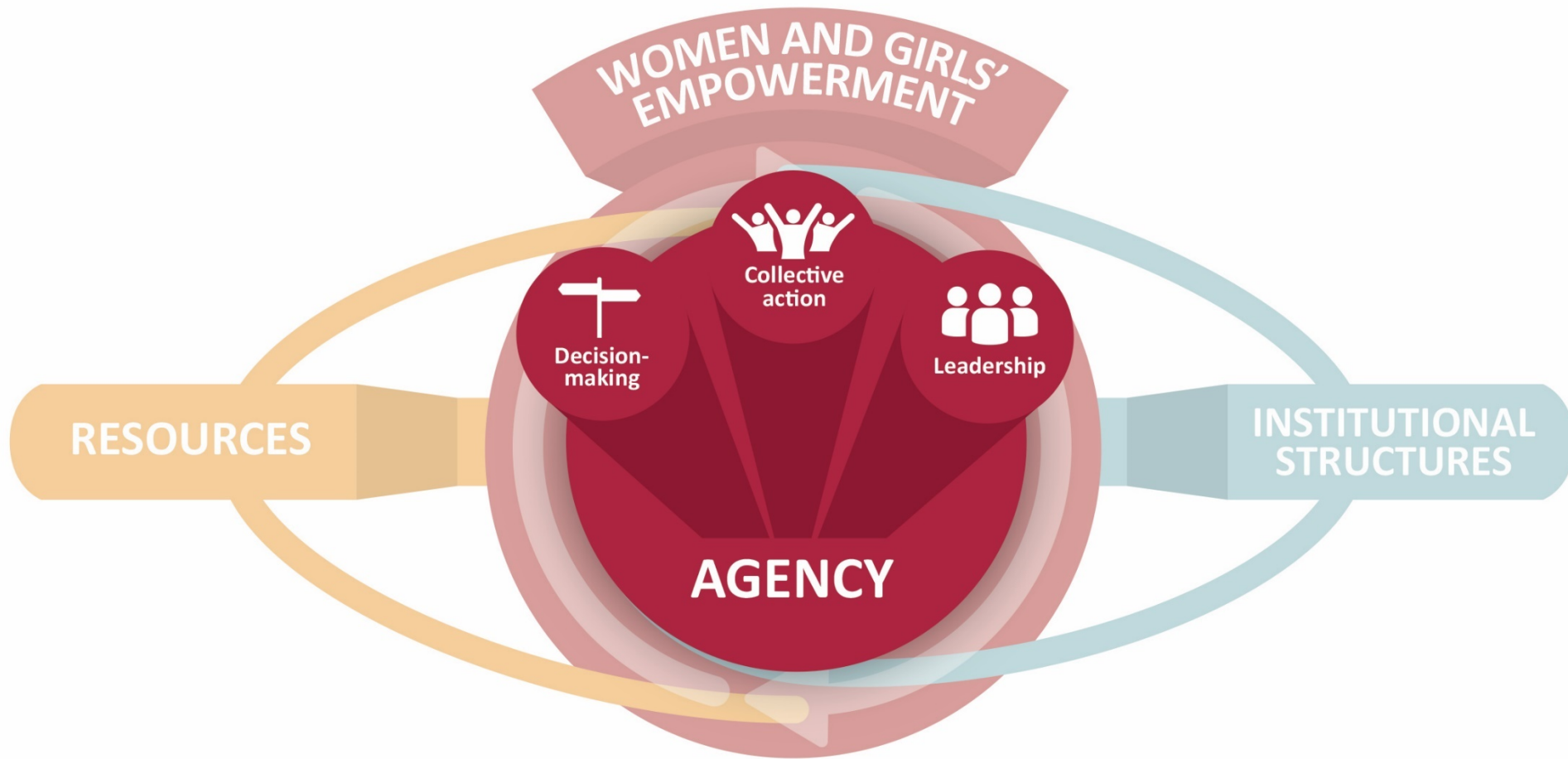


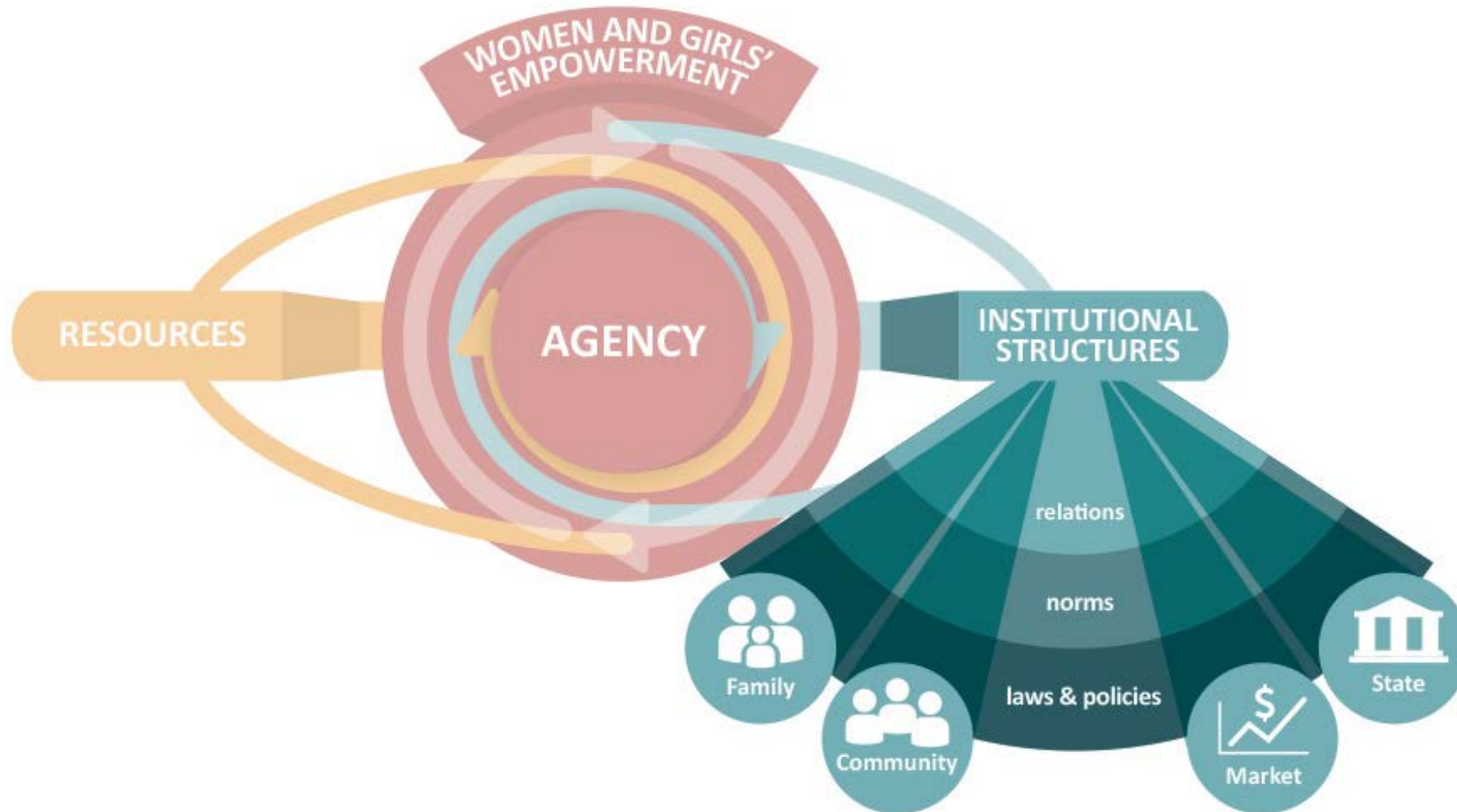
WHAT DO WE MEAN WHEN WE SAY “EMPOWERMENT”.



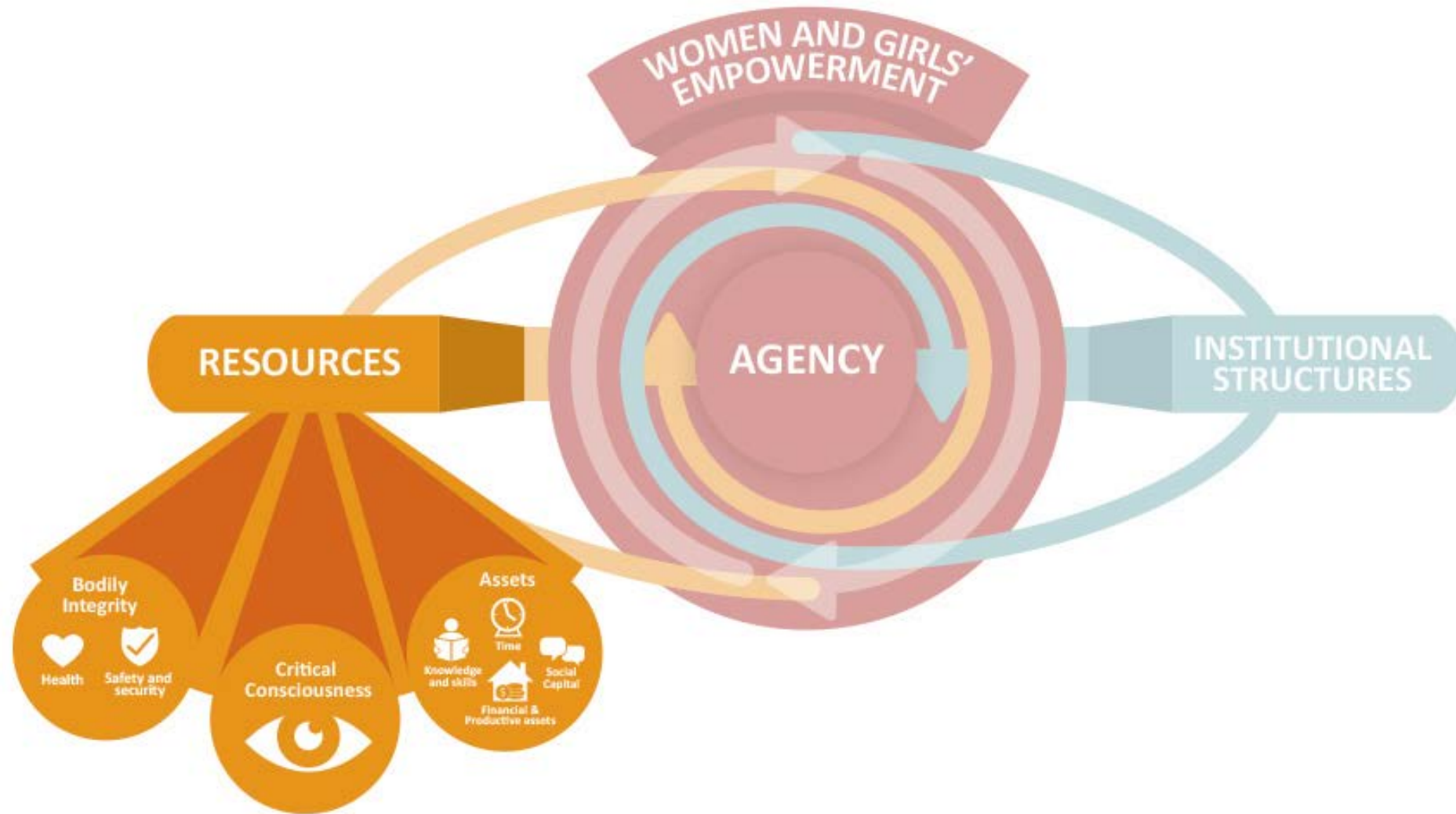
WHAT IS AGENCY? WHAT DOES IT 'LOOK LIKE'?



WOMEN'S EXPERIENCES ARE SHAPED BY INSTITUTIONAL STRUCTURES



EMPOWERMENT REQUIRES DIFFERENT RESOURCES



SO WHAT?

- These elements interact – can be mutually reinforcing (positively and negatively)
- Programs & policies can reinforce, shift, or respond to these elements.
- Evaluations try to understand how these elements support or hinder outcomes.

